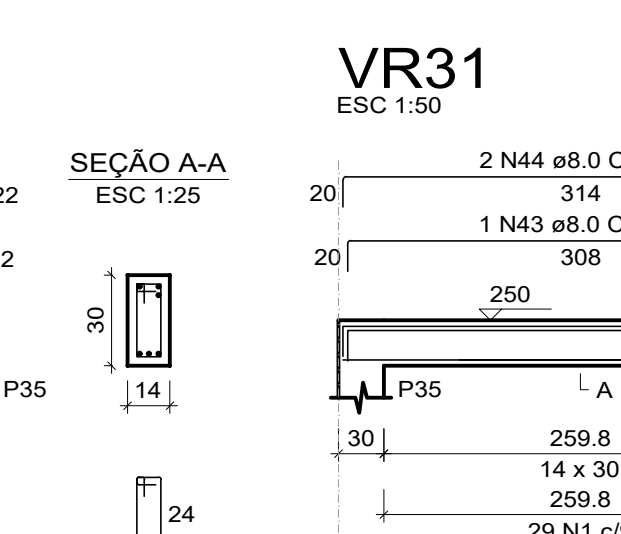
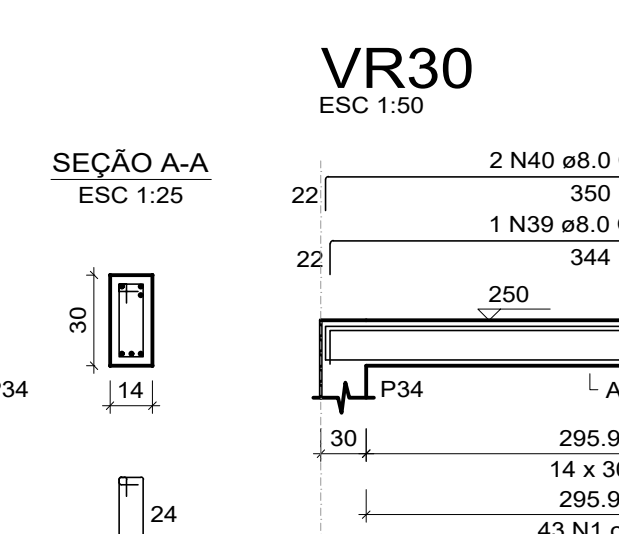
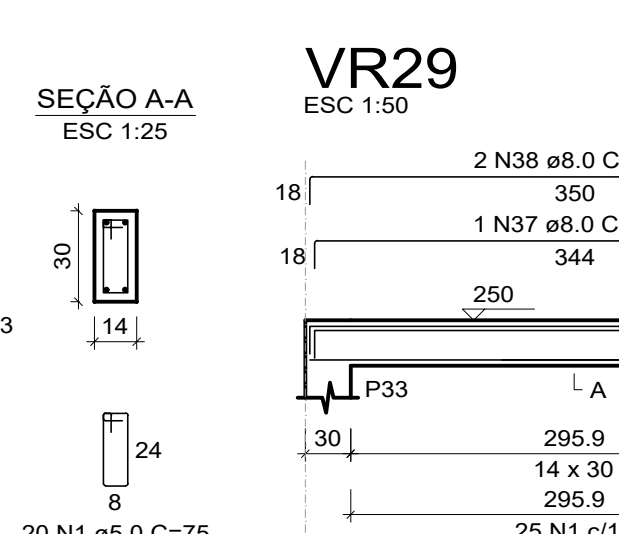
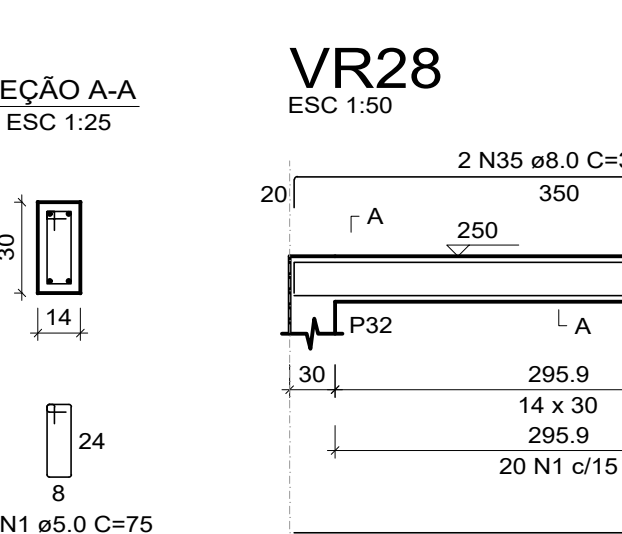
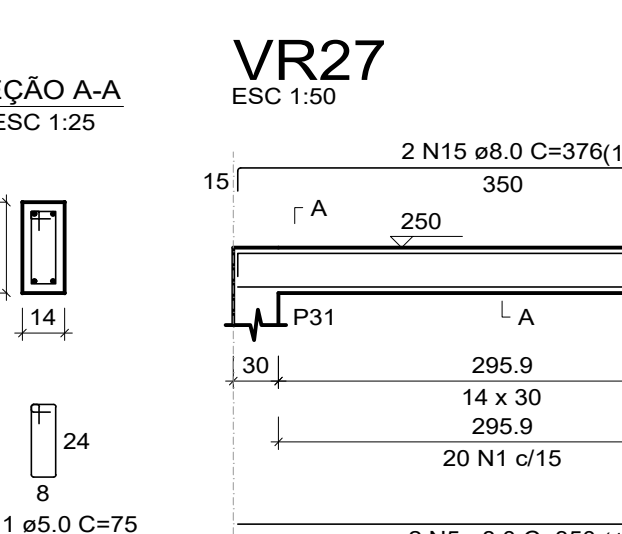
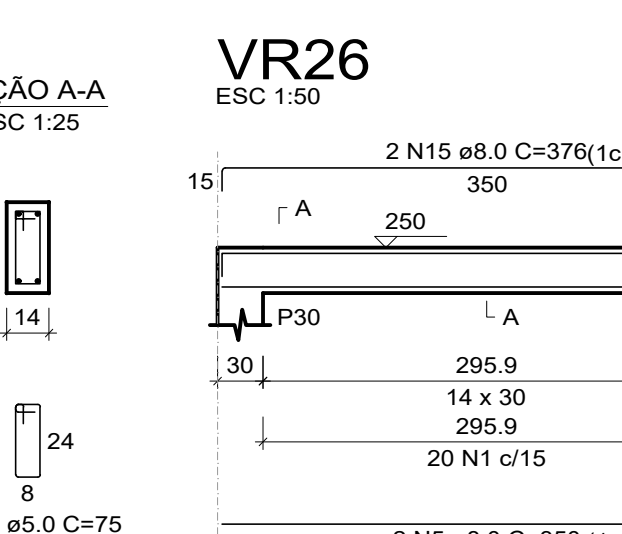
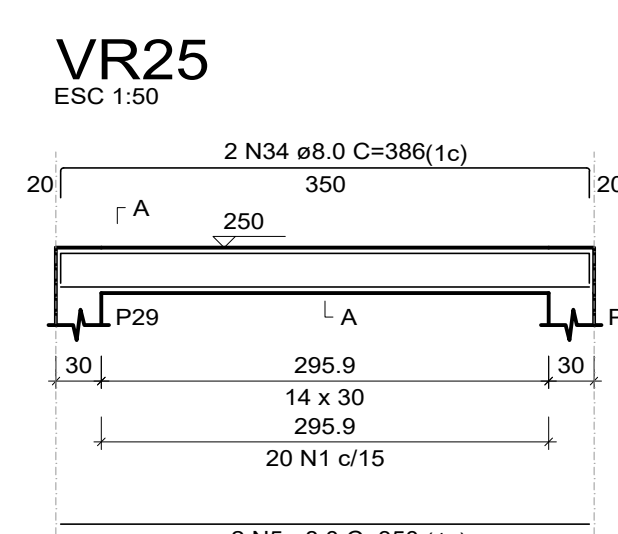
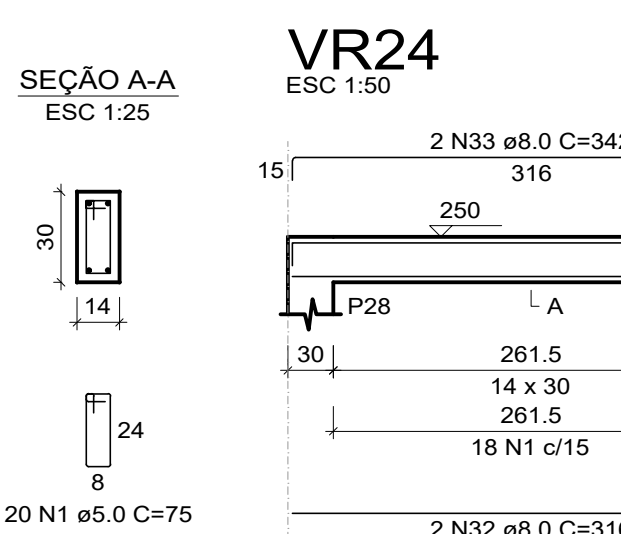
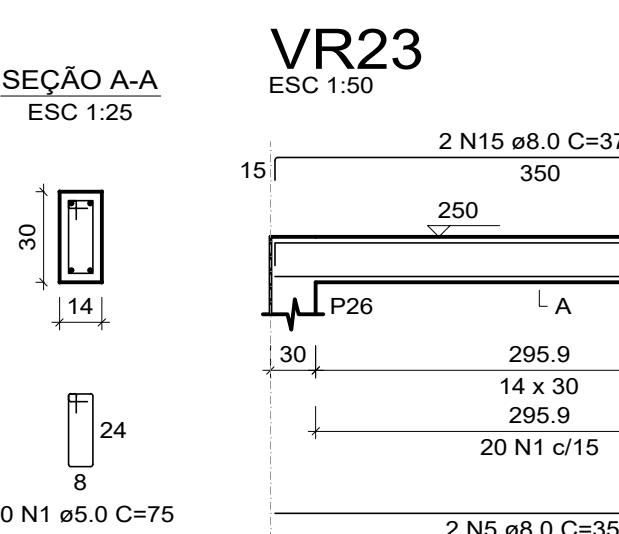
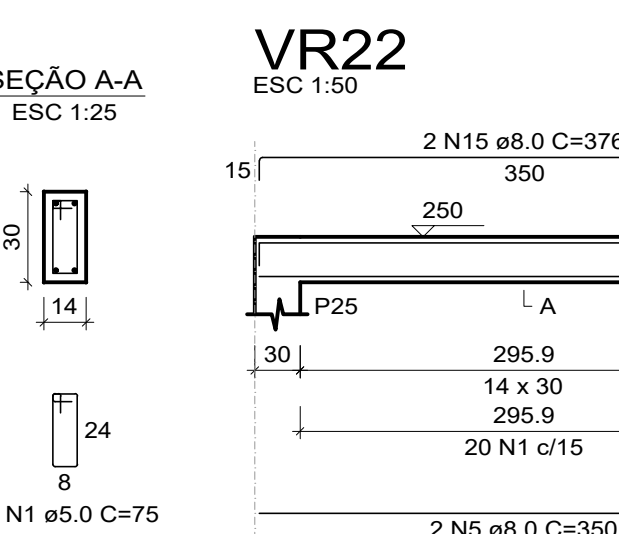
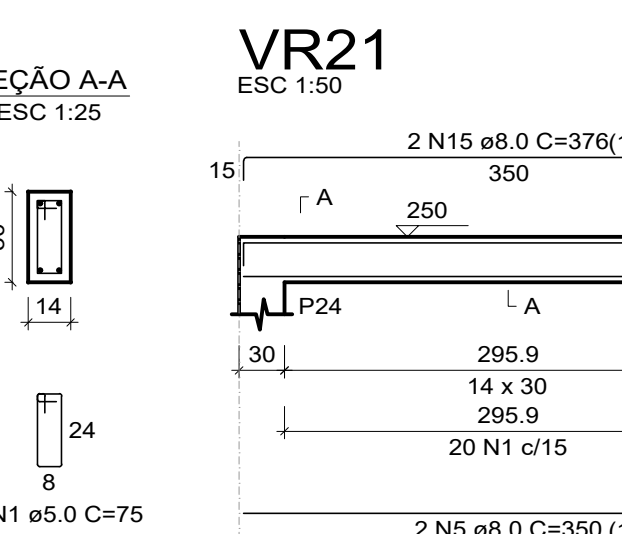
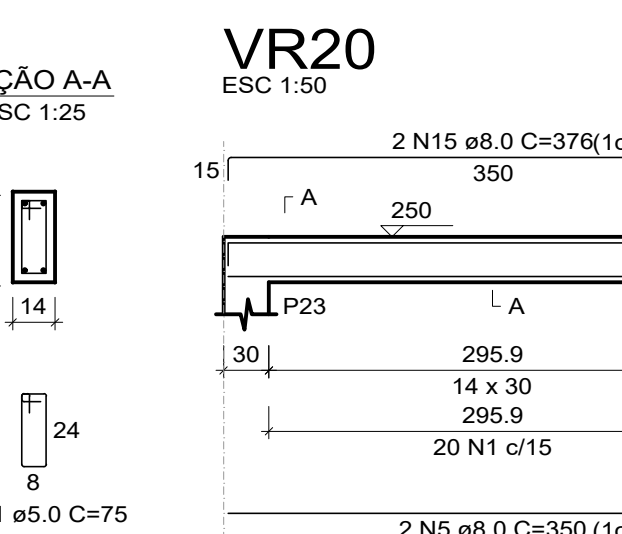
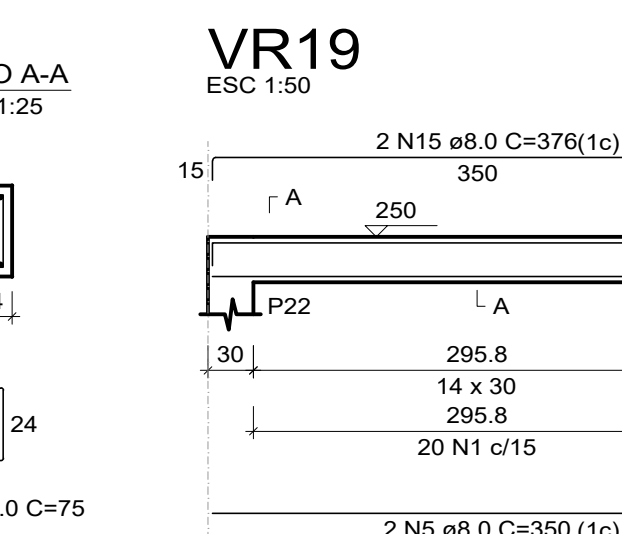
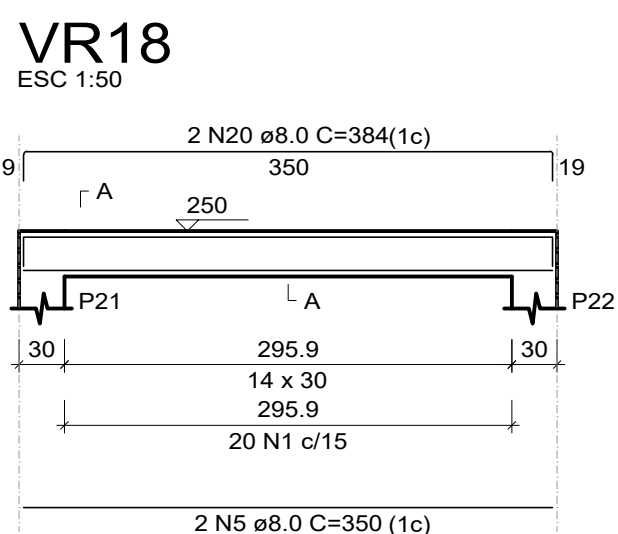
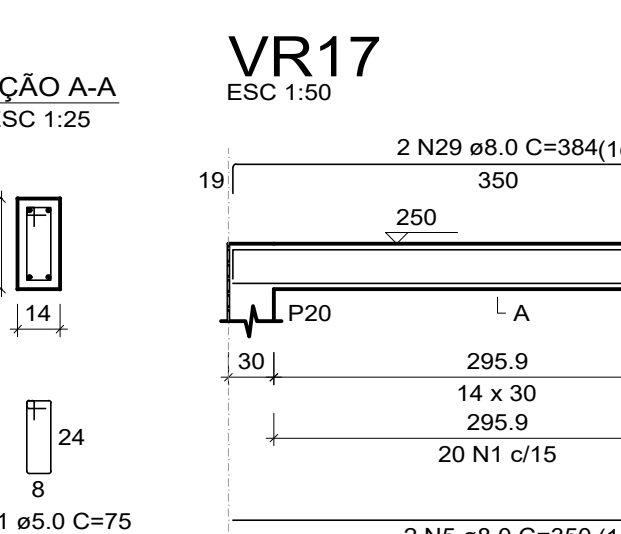
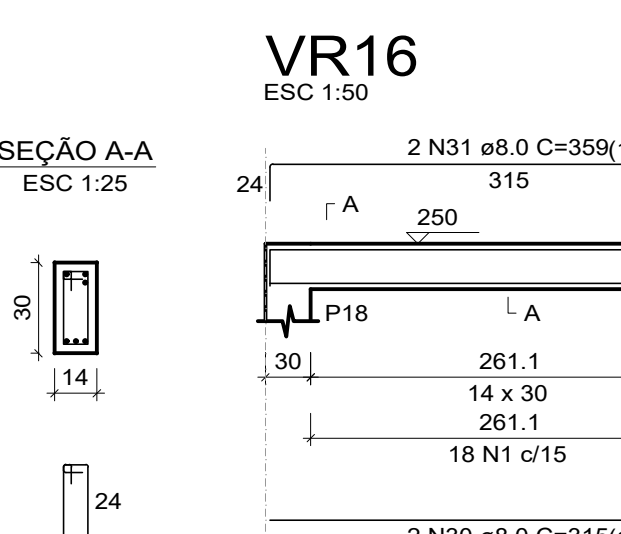
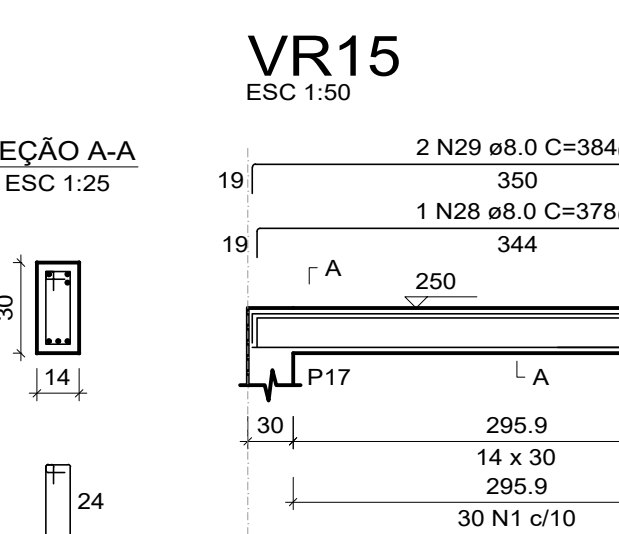
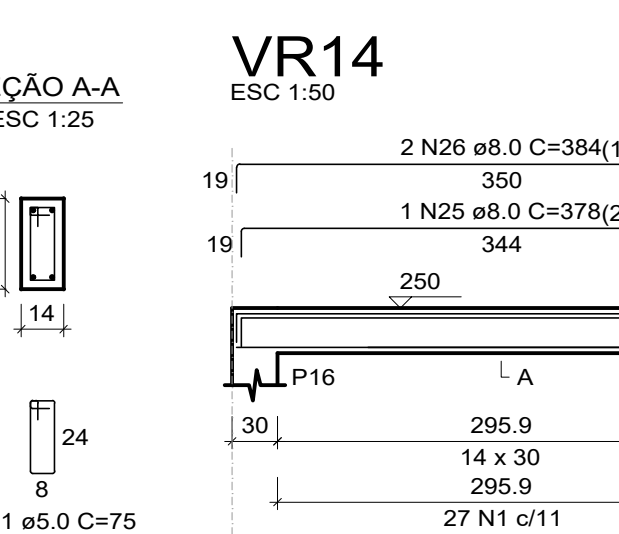
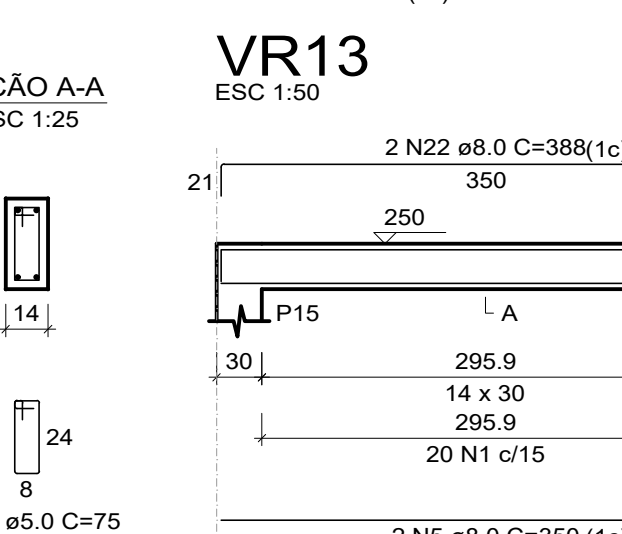
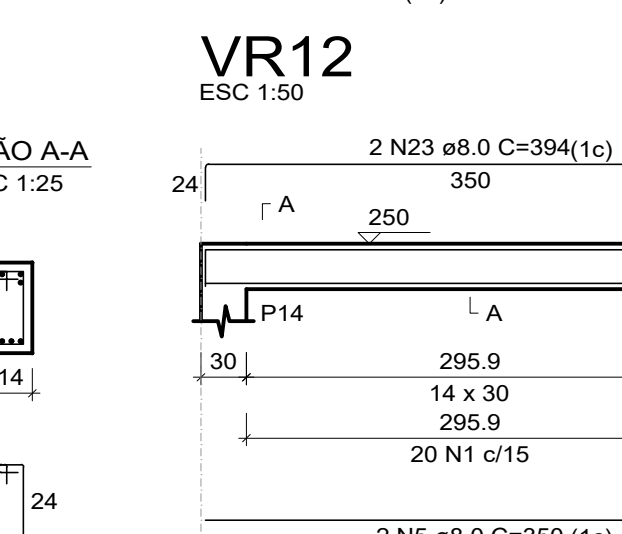
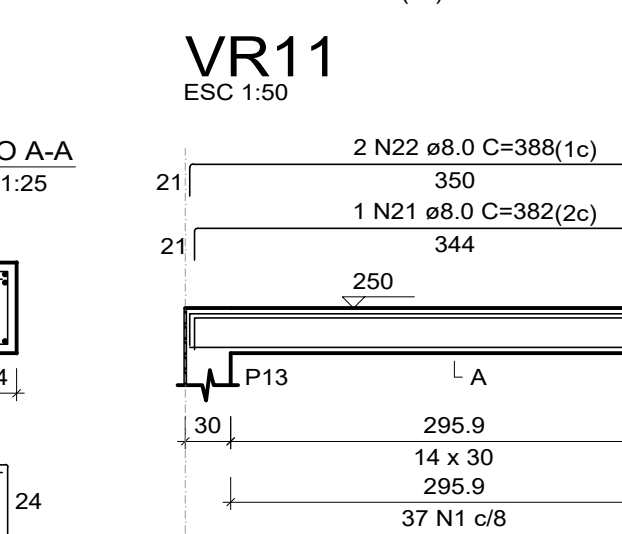
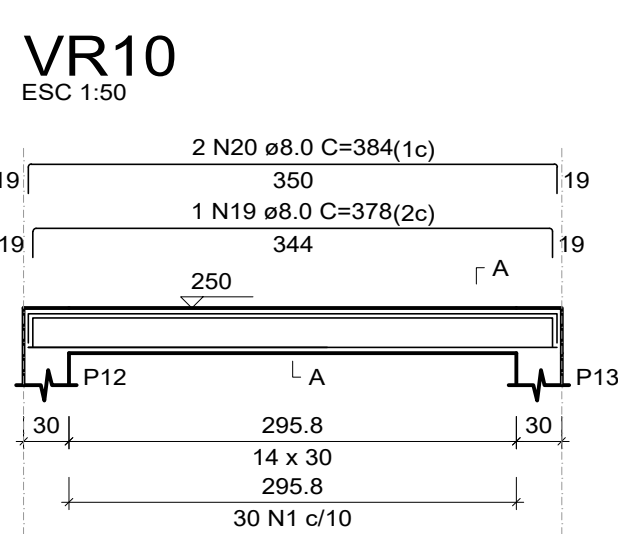
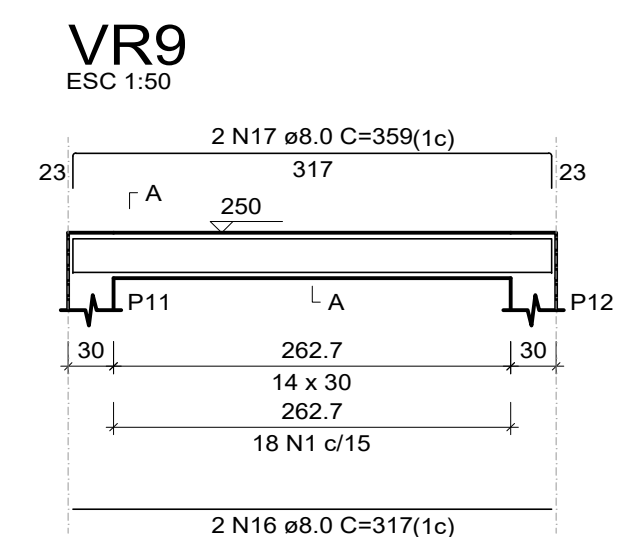
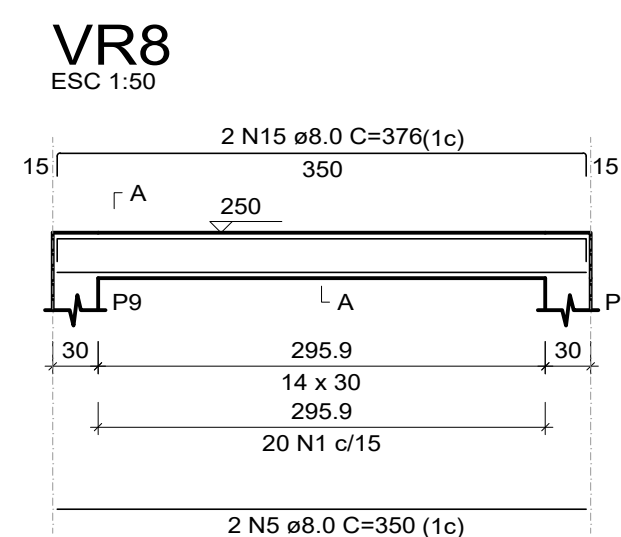
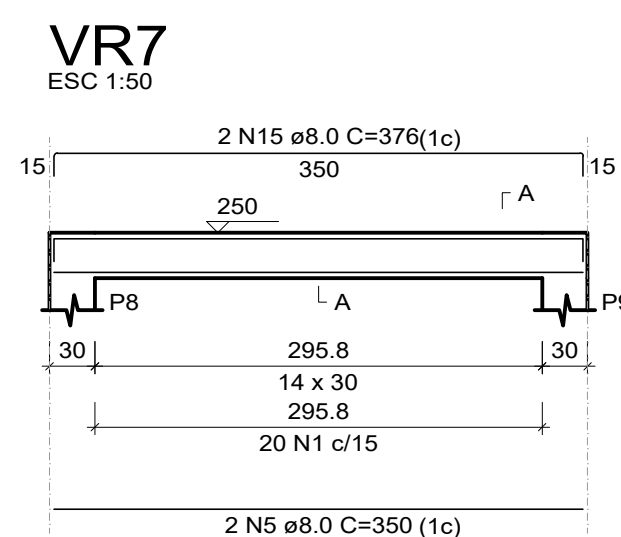
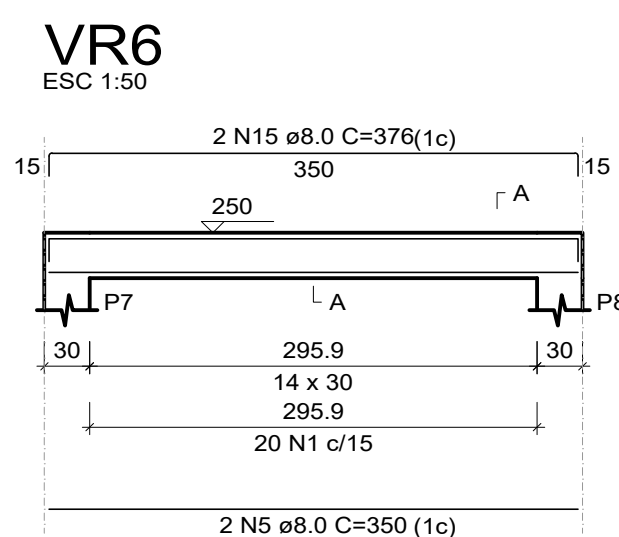
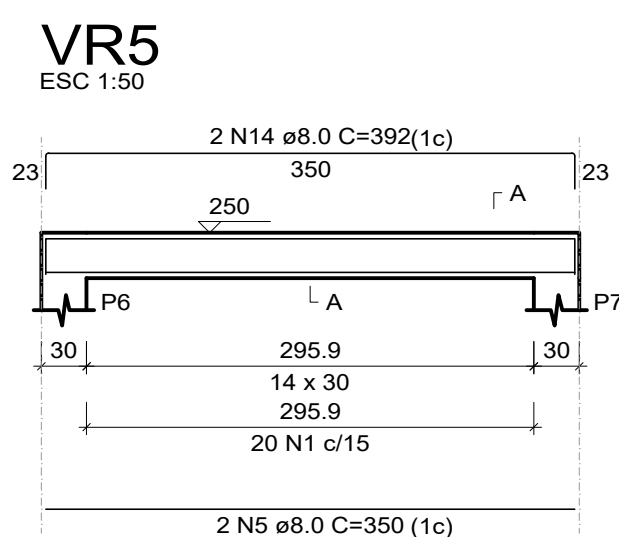
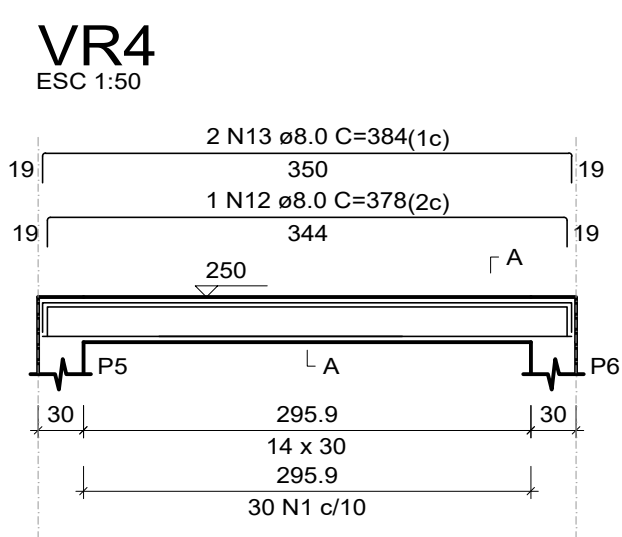
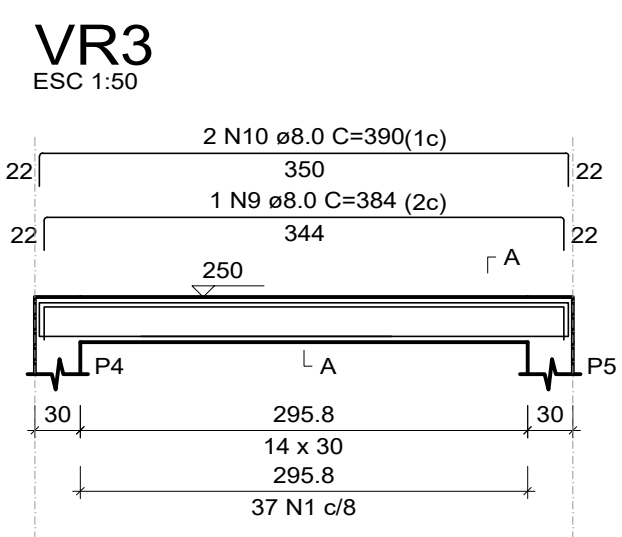
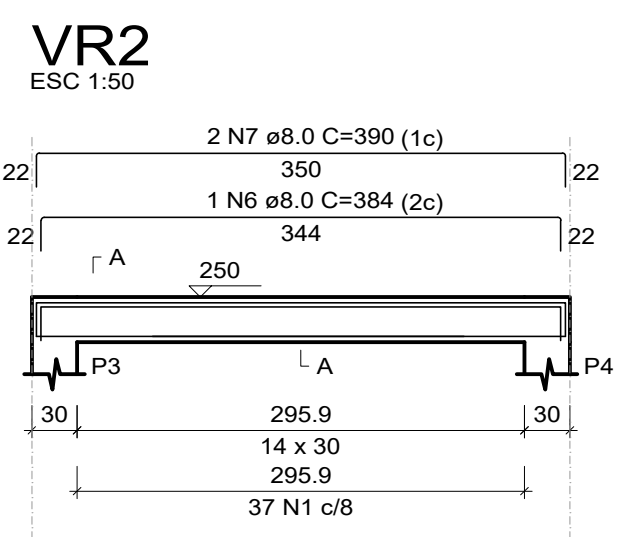
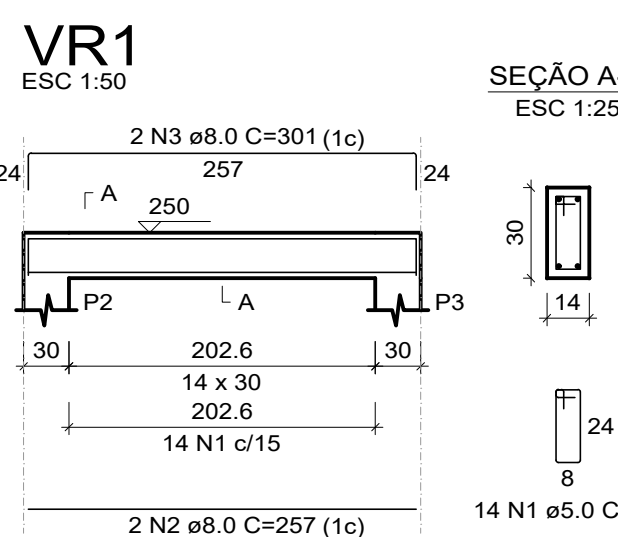
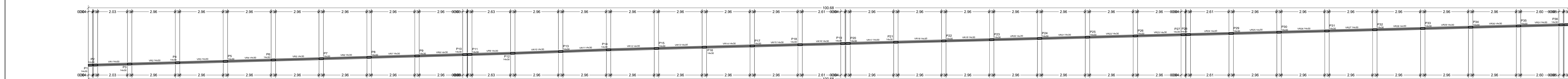


VISTA A
△



RELAÇÃO DO AÇO					
VR1	VR4	VR5	VR6	VR3	
CABO	2	8.0	2	257	54975
CABO	2	8.0	2	257	514
	3	8.0	2	301	302
	4	8.0	1	206	206
	7	8.0	1	384	384
	9	8.0	2	350	18900
	8	8.0	1	166	166
	11	8.0	2	350	350
	10	8.0	2	350	780
	12	8.0	1	378	378
	13	8.0	2	350	780
	14	8.0	2	350	784
	15	8.0	2	350	784
	16	8.0	2	317	634
	17	8.0	1	350	350
	18	8.0	1	108	108
	19	8.0	1	378	378
	20	8.0	4	384	1536
	21	8.0	2	350	350
	22	8.0	4	388	1552
	23	8.0	2	350	784
	24	8.0	1	221	221
	25	8.0	2	378	756
	26	8.0	2	384	768
	27	8.0	1	148	148
	28	8.0	1	378	378
	29	8.0	2	350	780
	30	8.0	2	315	630
	31	8.0	2	350	780
	32	8.0	2	316	632
	33	8.0	2	350	780
	34	8.0	2	388	1552
	35	8.0	2	350	780
	36	8.0	1	171	171
	37	8.0	1	350	350
	38	8.0	2	382	764
	39	8.0	1	384	384
	40	8.0	2	350	780
	41	8.0	1	350	350
	42	8.0	2	314	628
	43	8.0	1	344	344
	44	8.0	2	350	700

RESUMO DO AÇO			
ACO	DIAM (mm)	C.TOTAL (cm)	PESO + 0% (kg)
CABO	8.0	505	199.3
CABO	5.0	549.8	84.7
PESO TOTAL (kg)			
CABO	199.3		
CABO	84.7		
Volume de concreto (C-35) = 3.76 m³			
Área de forma = 66.16 m²			

GERÊNCIA DE PROJETOS E INFRAESTRUTURA
APROVADO
TÉCNICO RESPONSÁVEL PELA APROVAÇÃO

CEPI CRUZEIRO DO SUL
CONSTRUÇÃO DE MURO

ENDEREÇO
AV DAS ROSAS QD. 03 S/N, CRUZEIRO DO SUL,
APARECIDA DE GOIÂNIA - GO

ÁREA DO TERRENO
ÁREA PERMEAR
ÁREA EXISTENTE
ÁREA A DEMOLIR
ÁREA A CONSTRUIR
ÁREA TOTAL
CONSTRUÇÃO

VIDE ARG. 01

AUTOR: CARLOS ALBERTO DIAS JUNIOR | CREA-SP: 586244819

RT DA OBRA:

PROPRIETÁRIO: SECRETARIA DE ESTADO DA EDUCAÇÃO - CNPJ: 01.409.705/0001-50
PREPOSTO: SÁBRIA SILVA VIEIRA VALENTE - CPF: 041.530.091-64

ESTRUTURAL

TIPO DE PROJETO

MURO LATERAL DIREITA
PLANTA DE FORMA BALDRAME PT2
CORTE A-A PT2
FORMA DO PAI RESPALDO
DETALHAMENTO DAS VIGAS RESPALDO
ABSLANTO

DATA: MARÇO/2024
ESCALA: INDICADA
REVISÃO: 000
Nº RPT: RPT-01

REV. DATA DESCRIÇÃO VISTO

6/11
FOLHA